


Command-line installation and configuration of ZCB

Information

It is possible to record ZCB installation and export backup set configuration.

Once created, the installation recording and exported backup set configuration can be used to install ZCB via the command line on any number of other machines.

 Command-line operations, including ZCB installation, can be automated. Windows Powershell, batch scripts, Group Policies, and more can all be used for automation purposes.

The steps below can be used to build automated, large-scale rollouts of pre-configured ZCB installations to any number of machines. However, the exact automation process is beyond the scope of this article.

The following steps are required:

- [Record an Installation](#)
- [Configure Backup Sets and Export the Configuration](#)
- [Prepare Other Machines for Installation](#)
- [Use the Installation Record to Install ZCB](#)
- [Import the Backup Set Configuration](#)

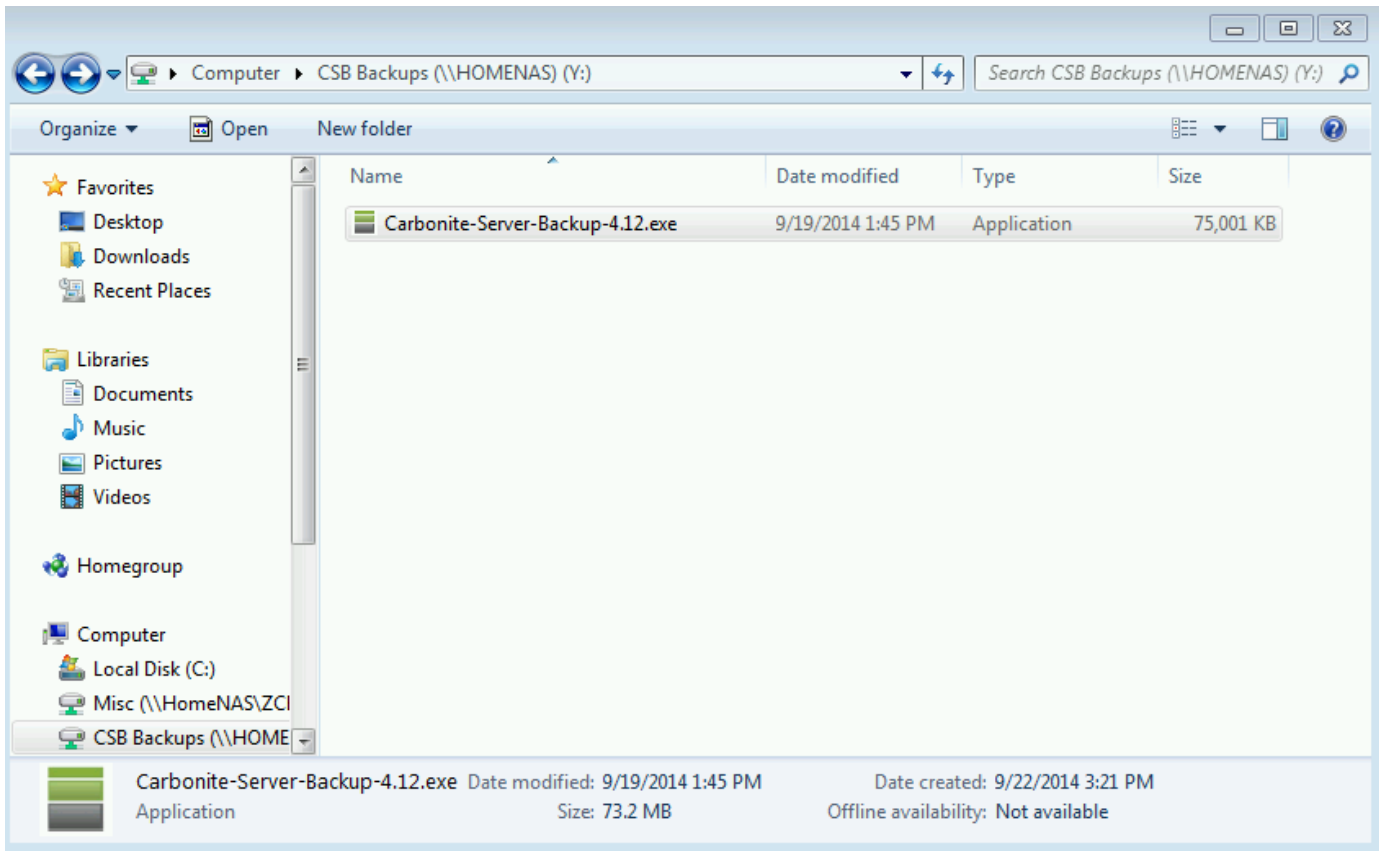
Record an Installation

Step 1: Download the installer

Log into your account and download the latest installer file.

Example:

The Carbonite-Server-Backup-4.12.exe file has been downloaded to Y:\.



Step 2: Extract the setup files

Do not run the installer by double-clicking. Instead, use a zip program, such as 7-zip, to open the installer, and extract the contents to a directory of your choosing.

Two folders will be extracted: one for 32-bit ZCB, and another for 64-bit ZCB.

Example:

The contents of Carbonite-Server-Backup-4.12.exe have been extracted to Y:\InstallationFiles

Y:\

File Edit View Favorites Tools Help

Add Extract Test Copy Move Delete Info

Y:\

Name

- Carbonite-Server-Backup-4.12.exe
- Thumbs.db
- .DS_Store

Extract

Extract to:
Y:\Carbonite-Server-Backup-4.12\

Path mode:
Full pathnames

Overwrite mode:
Ask before overwrite

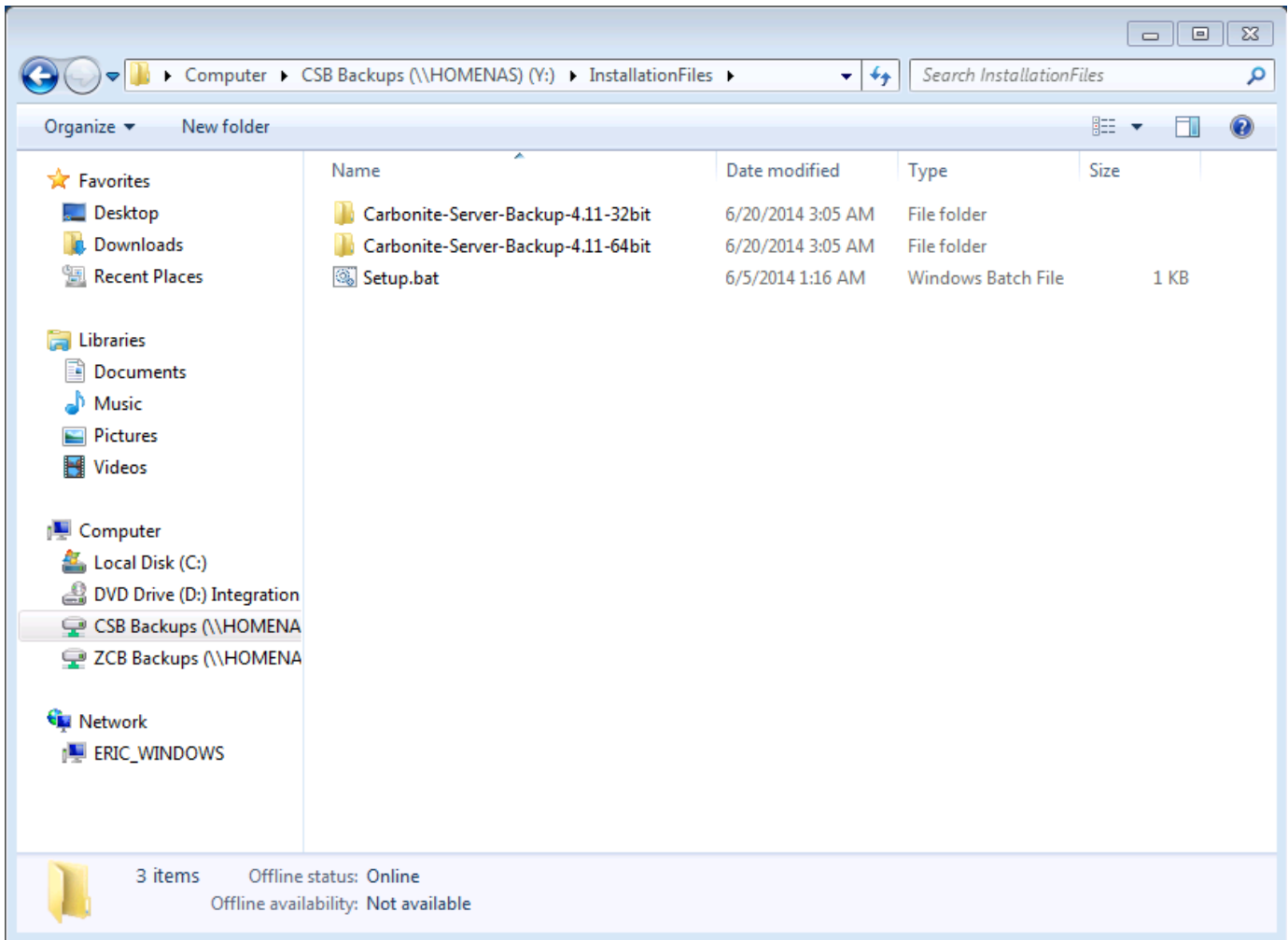
Password

 Show Password

OK Cancel Help

Attributes	Packed Size	Cor
A	76 800 552	
HS	157 184	
HA	6 148	

1 object(s) selected 76 800 552 76 800 552 2014-09-19 13:45



Step 3: Ensure that the Java Runtime Environment is installed

ZCB requires that the Java Runtime Environment be installed on the system prior to installation. To ensure a clean recording, please install the Java Runtime Environment before installation of ZCB begins.

Please see [How to Install the Java Runtime Environment](#) for more information.

Step 4: Start installation and create a recording

1. Open an elevated command prompt using the Run As Administrator option.
2. Change directories to the folder where you extracted the installer. There will be two folders located inside the directory where you extracted the installer, one containing the 32bit installer and another for the 64bit installer.
3. Change directory to the folder that matches your system.
 - a. For example, you'll need to change to the 32bit installation folder if you are on a 32bit machine.
4. Enter the following command
 - a. `setup.exe /r /f1"<Path to some folder>\Setup.iss"`
 - b. The filename or path inside the parentheses can be changed to suit your needs.
 - c. Make sure that the folder where you choose to create Setup.iss exists before installation begins.
5. The ZCB installation wizard will appear.
6. Proceed through the entire installation process.

The choices you make during installation will be recorded. Take care to make choices that are generic and match the expected configuration of the other machines on which you plan to install ZCB.

For example, you should not record an installation to a folder on the E:\ drive if not all machines will have an E:\ drive.



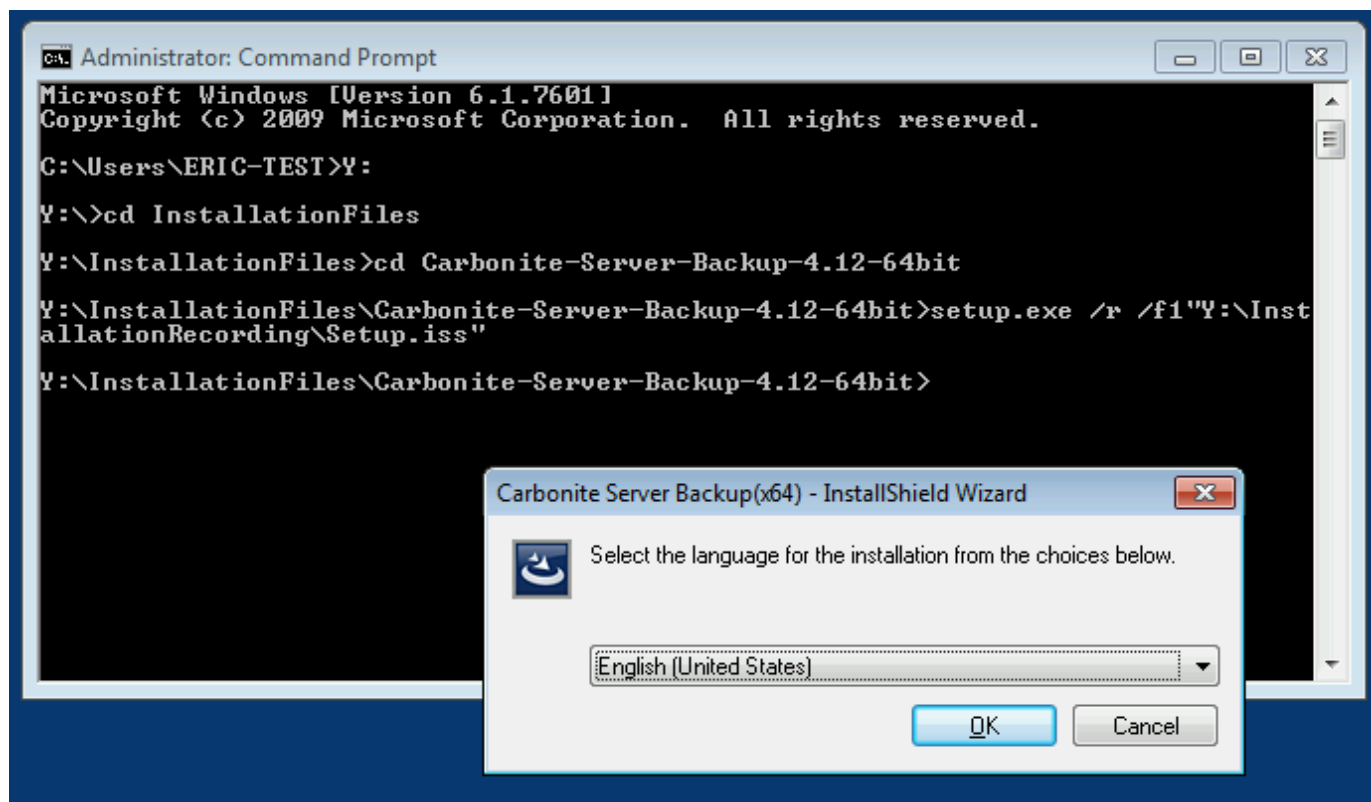
Disable the "Open ZCB after installation completes" option during installation.

The last step in command-line installation and configuration, "Import the Backup Set Configuration", requires that the user interface be

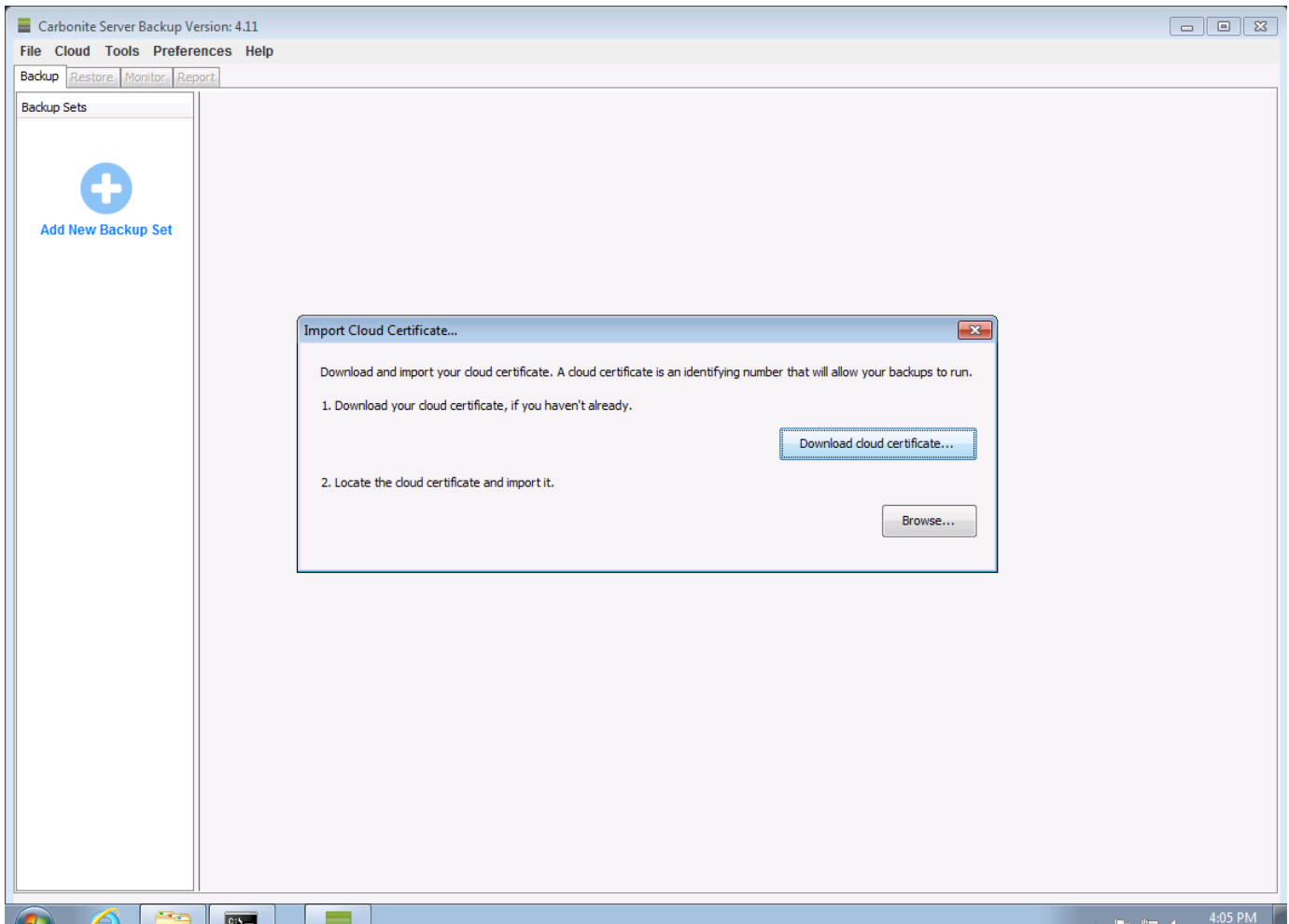
closed. If this option is not disabled, the user interface will open after installation and must be closed somehow (manually or by killing the process) before Import can proceed.

Example:

The 64-bit version of ZCB will be installed, and the Setup.iss recording file will be created in Y:\InstallationRecording\



Installation complete!



Configure Backup Sets and Export the Configuration

Step 1: Configure one or more backup sets

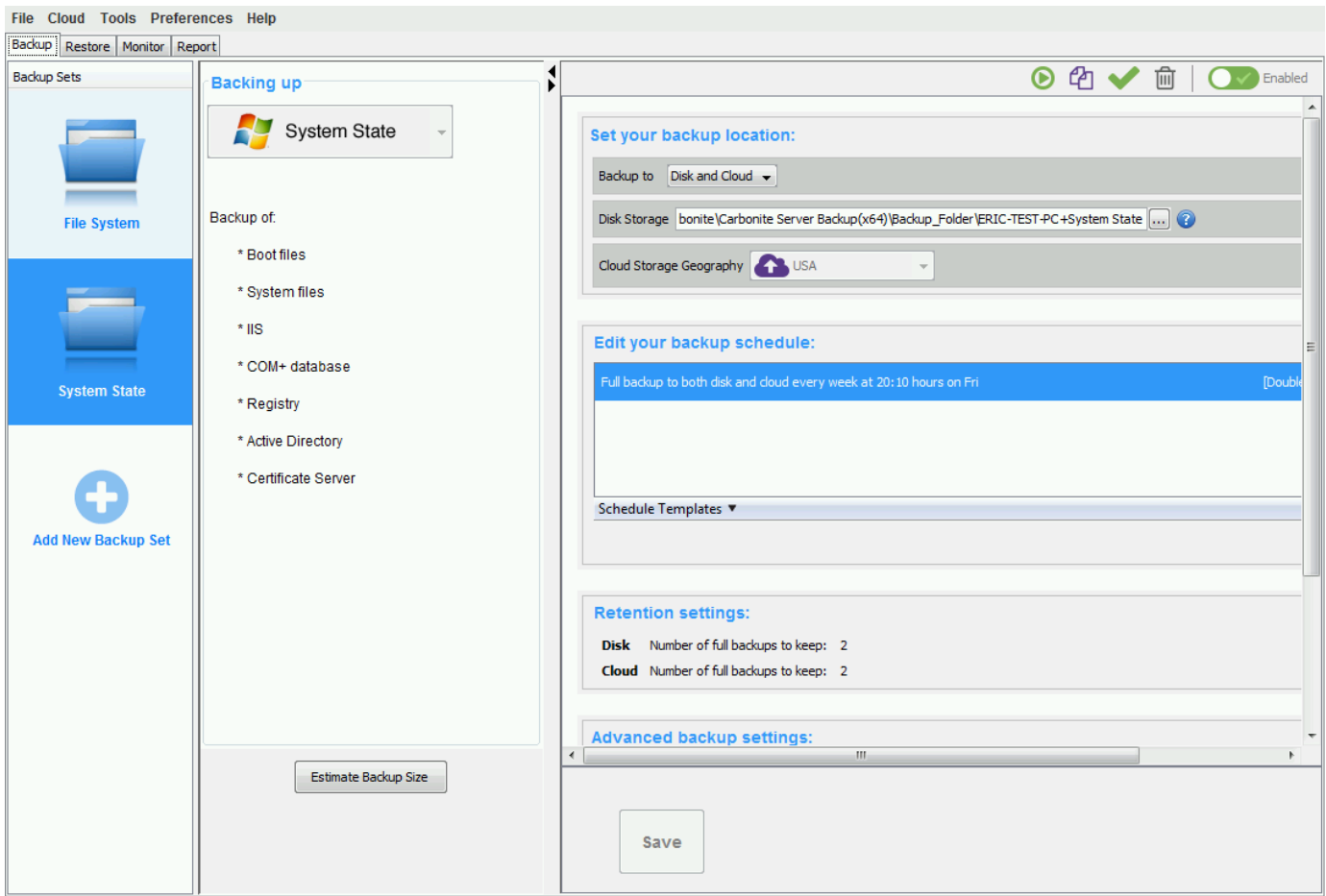
Open ZCB and configure one or more backup sets.

As with the installation, take care to make choices that make sense for the other machines on which you plan to install ZCB. When in doubt, stick to the defaults, as they represent the settings that work for most users.

Save each backup set after configuration. When you are done configuring all backup sets, exit the program.

Example:

Two backup sets, a File System backup and a System State backup, were configured and saved.

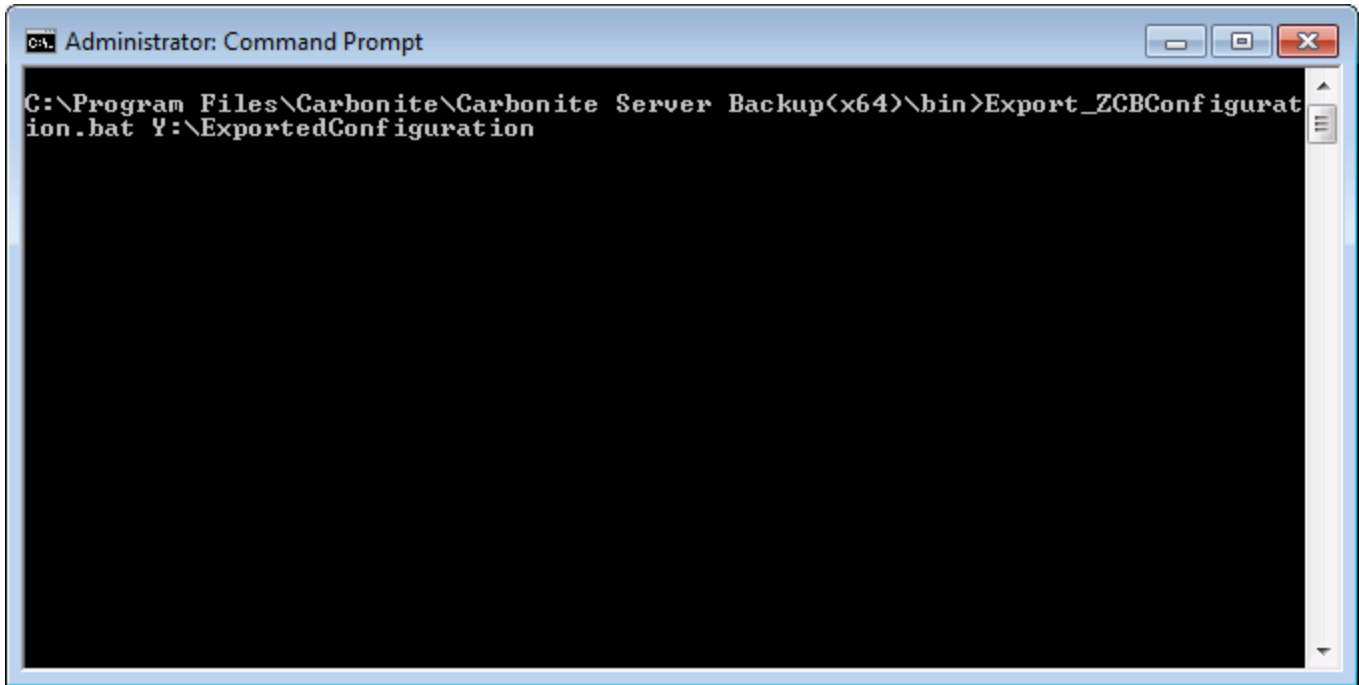


Step 2: Export backup set configuration

1. Close ZCB if it is open.
2. Open a command prompt.
3. Change directories to the \bin\ folder in the directory where ZCB is installed.
 - a. By default, this is C:\Program Files\Zmanda\Zmanda Cloud Backup\bin\
4. Run the following command
 - a. `Export_ZCBConfiguration.bat C:\Export_Folder`
 - b. You may replace **C:\Export_Folder** with any directory of your choice. The configuration will be exported as a zip file to this location.
5. A file named **ZCB.zip** will be found in the folder you choice after the export process is complete.

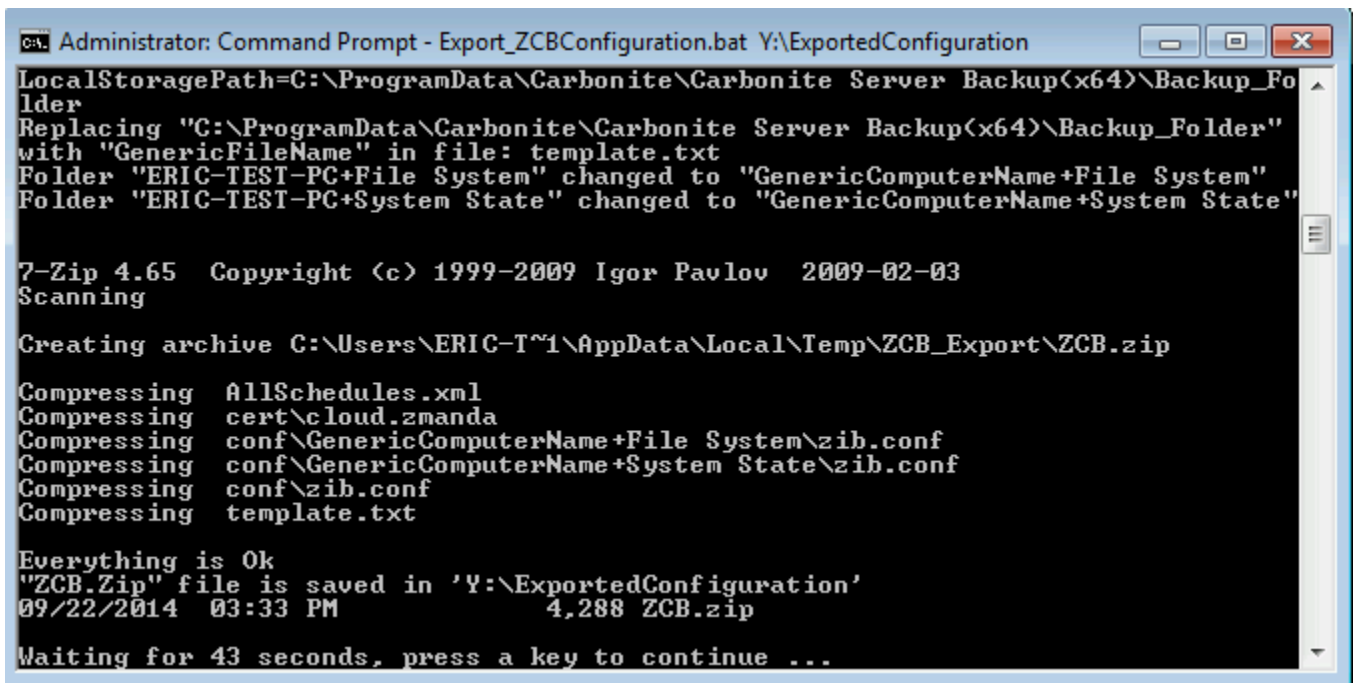
Example:

Start export.



```
Administrator: Command Prompt
C:\Program Files\Carbonite\Carbonite Server Backup(x64)\bin>Export_ZCBConfiguration.bat Y:\ExportedConfiguration
```

Export complete!



```
Administrator: Command Prompt - Export_ZCBConfiguration.bat Y:\ExportedConfiguration
LocalStoragePath=C:\ProgramData\Carbonite\Carbonite Server Backup(x64)\Backup_Folder
Replacing "C:\ProgramData\Carbonite\Carbonite Server Backup(x64)\Backup_Folder"
with "GenericFileName" in file: template.txt
Folder "ERIC-TEST-PC+File System" changed to "GenericComputerName+File System"
Folder "ERIC-TEST-PC+System State" changed to "GenericComputerName+System State"

7-Zip 4.65 Copyright (c) 1999-2009 Igor Pavlov 2009-02-03
Scanning

Creating archive C:\Users\ERIC-T~1\AppData\Local\Temp\ZCB_Export\ZCB.zip

Compressing AllSchedules.xml
Compressing cert\cloud.zmanda
Compressing conf\GenericComputerName+File System\zib.conf
Compressing conf\GenericComputerName+System State\zib.conf
Compressing conf\zib.conf
Compressing template.txt

Everything is Ok
"ZCB.Zip" file is saved in 'Y:\ExportedConfiguration'
09/22/2014 03:33 PM 4,288 ZCB.zip

Waiting for 43 seconds, press a key to continue ...
```

Prepare Other Machines for Installation

Ensure that the files necessary for installation and configuration of ZCB are available on all machines on which ZCB will be installed. For example, these files can be placed on a mapped network drive. They may also be copied to each machine using any method of your choice.

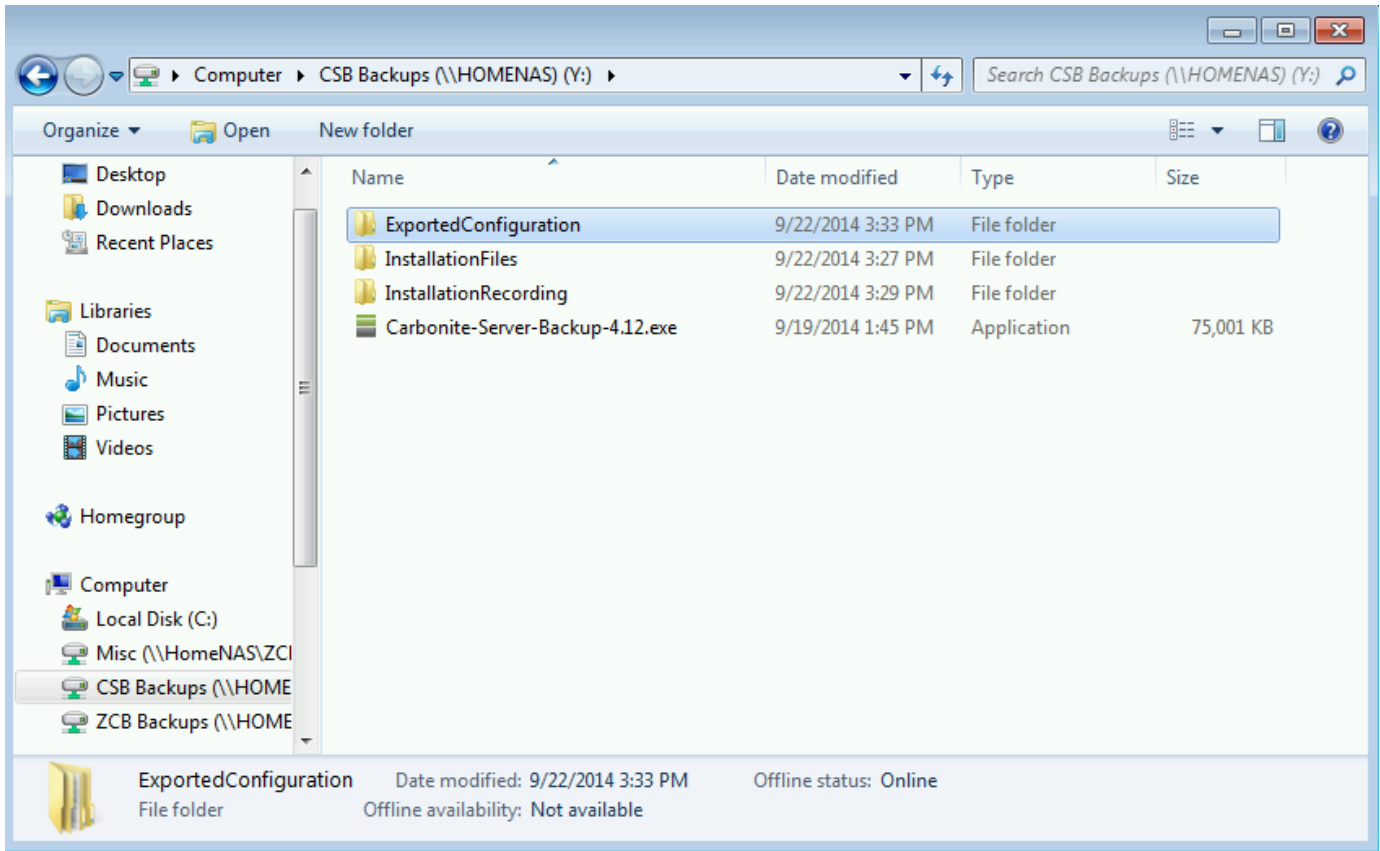
Each machine must have access to the following:

1. The installation recording. In our examples, this file is named **Setup.iss**.
2. All of the files extracted from the installer, including the **setup.exe** files for 32-bit or 64-bit CSB.
3. The **ZCB.zip** file that was created when configuration was exported.

The Java Runtime Environment must also be installed on each machine prior to ZCB installation. Please see [How to Install the Java Runtime Environment](#) for more information.

Example:

All files are available on a network share. The share has been mapped as the Y: drive for easy access.



Use the Installation Record to Install ZCB

Start the installation using the following command.

```
<Path to>\setup.exe /s /f1"<Path to>\Setup.iss"
```

Replace <Path to> with actual path to the setup.exe and Setup.iss files. The setup.exe file is found within the extracted setup files. There will be separate setup.exe files for 32bit and 64bit installations. You must provide the path to the correct setup.exe file.

For example, if you extracted setup.exe to C:\CSB\Install\Carbonite-Server-Backup-4.11-64bit\ and Setup.iss to C:\CSB\Install\SetupRecording\, then command would be:

```
C:\CSB\Install\Carbonite-Server-Backup-4.11-64bit\setup.exe /s /f1"C:\CSB\Install\SetupRecording\Setup.iss"
```

Installation will be silent and mostly invisible. An InstallShield setup window may appear in the task bar. Other than that, there will be little feedback once the installation begins.

The command prompt will immediately be available for other commands. If you wish for the command prompt to wait until setup is complete, use this command instead.

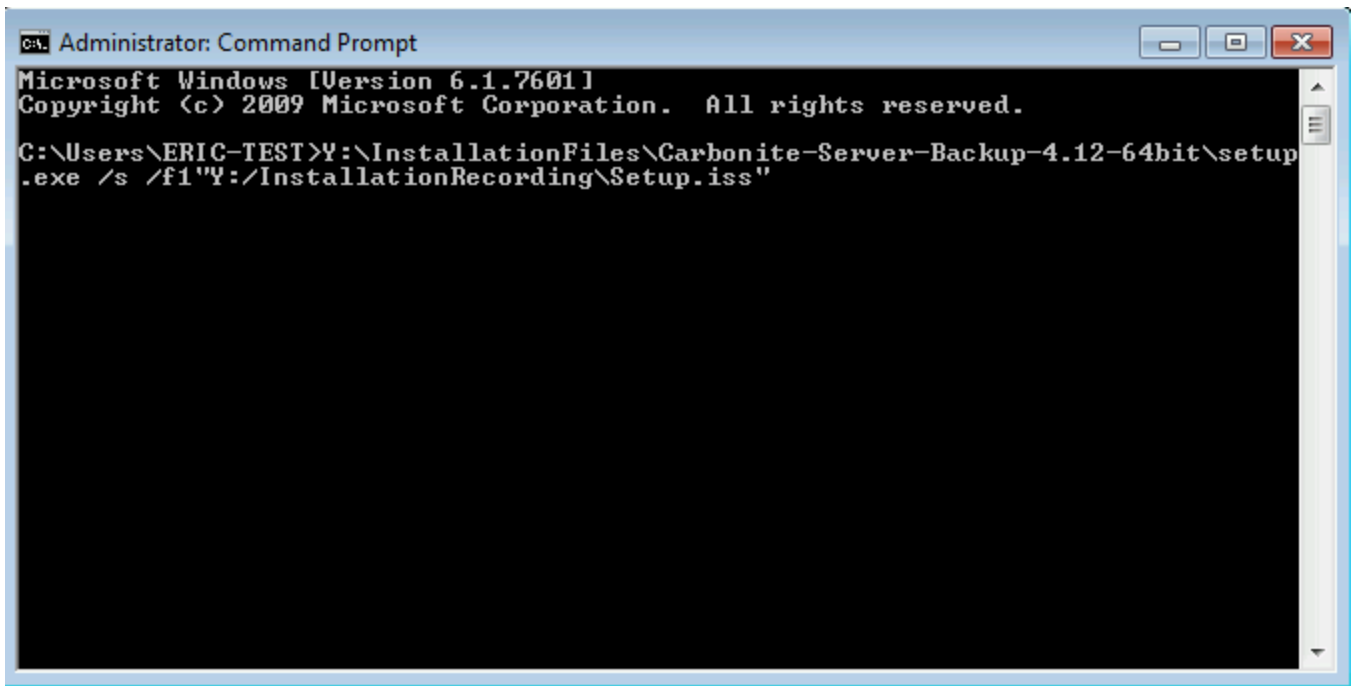
```
start /WAIT <Path to>\setup.exe /w /s /f1"<Path to>\Setup.iss"
```

With either command, the setup.exe process will be visible in Task Manager, and an installation log file will be created in the directory where Setup.iss is located.

ZCB will open automatically once installation is complete, if the "Open ZCB after installation completes" option was selected in the initial recording.

Example:

Start installation via command line.



```
Administrator: Command Prompt
Microsoft Windows [Version 6.1.7601]
Copyright (c) 2009 Microsoft Corporation. All rights reserved.

C:\Users\ERIC-TEST>Y:\InstallationFiles\Carbonite-Server-Backup-4.12-64bit\setup
.exe /s /f1"Y:\InstallationRecording\Setup.iss"
```

Installation in progress. The Task Manager has been opened to show the setup.exe process.

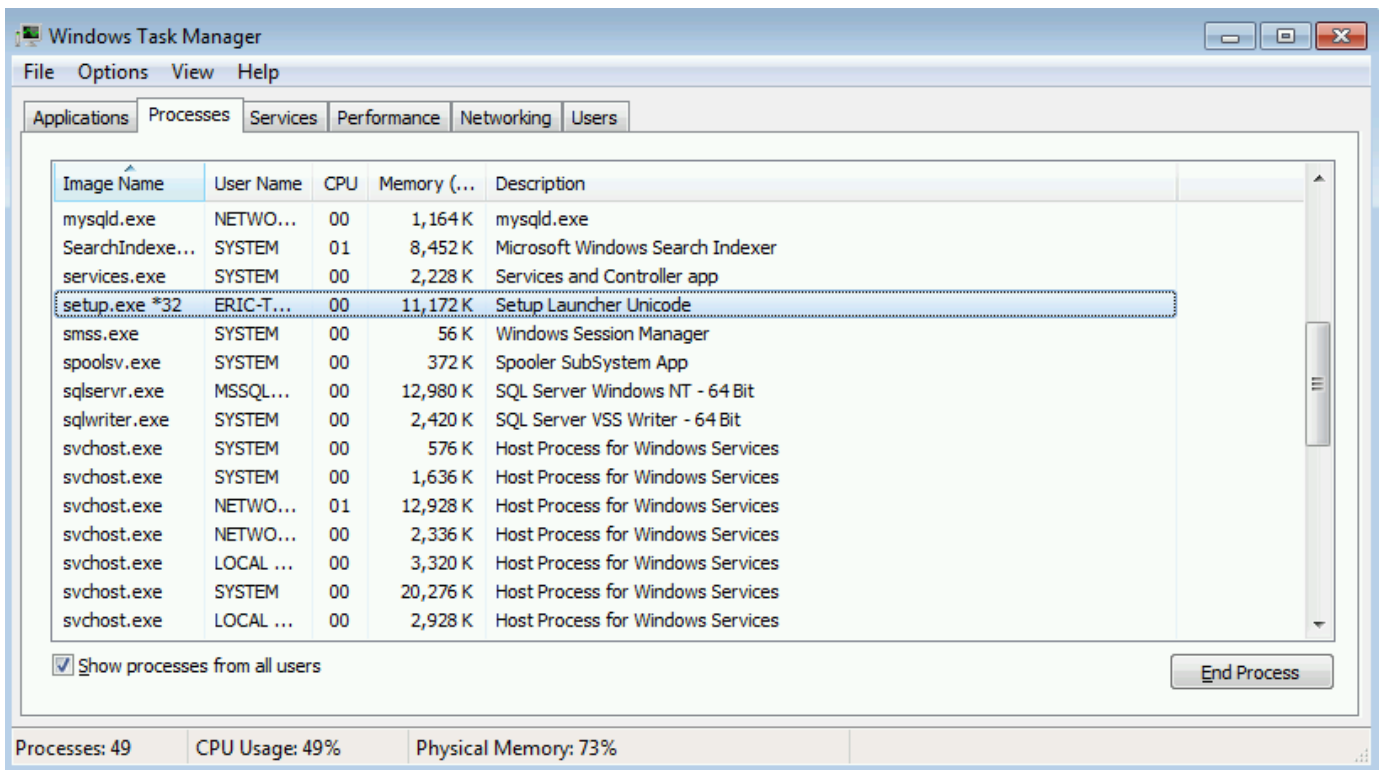


Image Name	User Name	CPU	Memory (...)	Description
mysqld.exe	NETWO...	00	1,164 K	mysqld.exe
SearchIndexe...	SYSTEM	01	8,452 K	Microsoft Windows Search Indexer
services.exe	SYSTEM	00	2,228 K	Services and Controller app
setup.exe *32	ERIC-T...	00	11,172 K	Setup Launcher Unicode
smss.exe	SYSTEM	00	56 K	Windows Session Manager
spoolsv.exe	SYSTEM	00	372 K	Spooler SubSystem App
sqlservr.exe	MSSQL...	00	12,980 K	SQL Server Windows NT - 64 Bit
sqlwriter.exe	SYSTEM	00	2,420 K	SQL Server VSS Writer - 64 Bit
svchost.exe	SYSTEM	00	576 K	Host Process for Windows Services
svchost.exe	SYSTEM	00	1,636 K	Host Process for Windows Services
svchost.exe	NETWO...	01	12,928 K	Host Process for Windows Services
svchost.exe	NETWO...	00	2,336 K	Host Process for Windows Services
svchost.exe	LOCAL ...	00	3,320 K	Host Process for Windows Services
svchost.exe	SYSTEM	00	20,276 K	Host Process for Windows Services
svchost.exe	LOCAL ...	00	2,928 K	Host Process for Windows Services

Processes: 49 CPU Usage: 49% Physical Memory: 73%

Installation complete!

Import the Backup Set Configuration

1. Wait for installation to complete.
2. Make sure the ZCB user interface is closed.
 - a. The ZCB user interface process is named **javaw.exe**. If necessary for automation purposes, this process can be killed via command line.
3. Open a command prompt.
4. Change directories to the \bin\ folder in the directory where ZCB is installed.

- a. By default, this is C:\Program Files\Zmanda\Zmanda Cloud Backup\bin\
- 5. Run the following command
 - a. Import_ZCBConfiguration.bat C:\Export_Folder
 - b. Replace **C:\Export_Folder** with the folder path that contains the **ZCB.zip** file

After completion of the import process, open the ZCB UI to make sure that all the backup sets and their respective configurations are complete.

Example:

Start the import from the command line.

```

Administrator: Command Prompt
Microsoft Windows [Version 6.3.9600]
(c) 2013 Microsoft Corporation. All rights reserved.

C:\Users\Administrator>cd "C:\Program Files\Carbonite\Carbonite Server Backup(x64)\bin"

C:\Program Files\Carbonite\Carbonite Server Backup(x64)\bin>Import_ZCBConfiguration.bat Y:\ExportedConfiguration_
  
```

Import complete.

```

Administrator: Command Prompt - Import_ZCBConfiguration.bat Y:\ExportedC...
Task name: ERIC-SRV2012-1+File System_Incremental_backup_and_upload
Incremental backup to both disk and cloud every day at 21:10 hours
Schedule: Daily2014-07-03T21:10:23@ERIC-SRV2012-1+File System_Incremental_backup_and_upload
Task name: ERIC-SRV2012-1+File System_Incremental_backup_and_upload
Incremental backup to both disk and cloud every day at 21:10 hours
Task: ERIC-SRV2012-1+File System_Full_backup_and_upload
Schedule: MonthlyDOW2014-07-03T21:00:23@ERIC-SRV2012-1+File System_Full_backup_and_upload
Task name: ERIC-SRV2012-1+File System_Full_backup_and_upload
Full backup to both disk and cloud every month at 21:00 hours on first Friday
Schedule: MonthlyDOW2014-06-16T21:00:12@ERIC-SRV2012-1+File System_Full_backup_and_upload
Task name: ERIC-SRV2012-1+File System_Full_backup_and_upload
Full backup to both disk and cloud every month at 21:00 hours on first Friday
Backupsets ,Configuration files are saved in ZCB install path Conf directory and Schedules are uploaded to windows taskscheduler.
Waiting for 51 seconds, press a key to continue ...
  
```

Backup sets successfully imported! When CSB is next opened, the backup sets will be available.

Carbonite Server Backup Version: 4.12

File Cloud Tools Preferences Help

Backup Restore Monitor Report

Backup Sets

- File System
- System State
- Add New Backup Set

Backing up

File System

Computer

- Local Disk (C:)
- \$Recycle.Bin
- ArchivedBackups
- Documents and Settings
- pagefile.sys
- Perflogs
- ProgramData
- Program Files
- Program Files (x86)
- Recovery
- System Volume Information
- Temp
- Test
- Users
- All Users
- amandabackup
- amandabackup.ERIC-TEST-PC

Refresh

Exclude Files:

Estimate Backup Size

Set your backup location:

Backup to: Disk and Cloud

Disk Storage: arbonite\Carbonite Server Backup(x64)\Backup_Folder\ERIC-TEST-PC+File System

Cloud Storage Geography: USA

Edit your backup schedule:

- Full backup to both disk and cloud every month at 21:00 hours on first Fri
- Incremental backup to both disk and cloud every day at 21:10 hours

Schedule Templates

Retention settings:

- Disk: Number of full backups to keep: 2
- Cloud: Number of full backups to keep: 2

Advanced backup settings:

Save